

## In this issue

**From the Riverkeeper** .....2

**Board Updates and Calendar** .....3

**Recreation** .....4

**Volunteering** .....6

**Restoration** .....8

**River Issues** .....10

**Watershed Councils** .....12

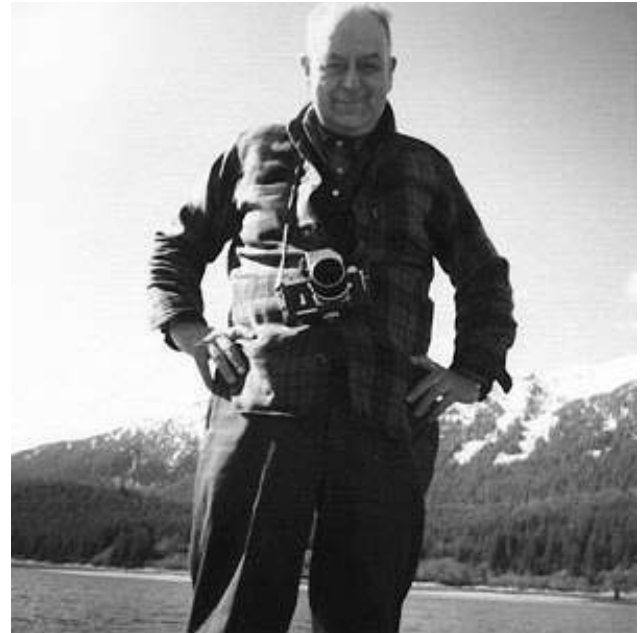
**Thanking our Supporters** .....14

## River Celebration and Amos Burg Awards

**M**ark your calendar for Willamette Riverkeeper's River Celebration and Amos Burg Awards.

This evening of celebration, drinks, and hors d'oeuvres will be held Thursday, October 9th, 2008 from 6:30 to 9 pm at The Melody Ballroom in Portland.

Join us as we honor Amos Burg, a native Portlander, and one of the last people to paddle many of the West's rivers before dams altered their natural condition. Burg was an accomplished photographer and writer who wrote for National Geographic. As a global traveler, Burg illuminated the inter-connectedness of the far corners of the world, and its rivers and seas through his writings, photographs and films. He also grew up paddling local rivers, from the Willamette, Columbia Slough, to the Columbia.



The October event will celebrate the Willamette and Willamette Riverkeeper's work, and highlight efforts underway to improve this amazing Oregon River. The evening will include a showcase of Willamette Riverkeeper's recent accomplishments and goals, a short film about the life of Amos Burg, and a raffle of items including outdoor gear and adventures. In the spirit of Amos Burg, we will also recognize notable members of our community for their work in River Recreation, Advocacy, and Lifetime Achievement.

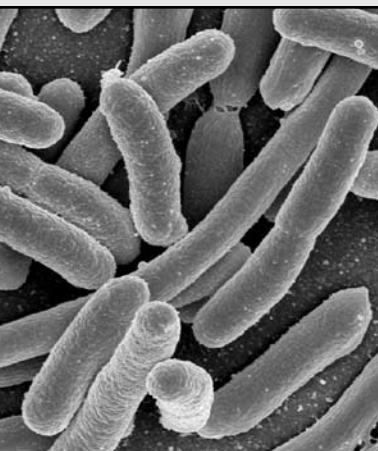
We hope you can join us for this first celebration event and show your support of the River. Tickets (\$35 each) go on sale August 1. Help make this event a success by attending, volunteering, sponsoring, or donating a raffle item, please contact Amy Baur at 503-223-6418.



Willamette RIVERKEEPERS'  
**PADDLE OREGON**  
AUGUST 18 - 22 2008  
100 miles Jefferson Park to Clackamette Park

*JOIN US FOR  
PADDLE  
OREGON 2008!*

Details on page 5.



## Summer Bacteria Monitoring Program

**W**illamette Riverkeeper's Bacteria Monitoring Program, which tests for levels of *E. coli*, has been underway since the second week in April. Volunteers will continue to test 19 high priority sites in the Portland and Salem areas, bi-monthly through September.

This year, we have not seen any sites exceed the EPA recommended criteria for *E. coli*, which is 235 MPN/100 mL in a single sample. Despite Oregon having its own standard, WR uses the federal standard. In Oregon, the allowable limit of *E. coli* concentration is 406 MPN/100 mL, which is the second highest in the country.

*E. coli*, continued on page 7.

Scanning Micrograph of *E. coli* bacteria. *E. coli* bacteria magnified to 10,000x.

Working to make  
the Willamette River  
Watershed healthy  
for fish and wildlife,  
and safe for fishing  
and swimming,  
forever and for all.

**Riverkeeper &  
Executive Director:**  
Travis Williams

**River Protection Coordinator:**  
Amy Morrison

**Development Coordinator:**  
Amy Baur

**Staff Attorney:**  
Brenna Bell

**Water Quality Coordinator /  
NWSA AmeriCorps Member:**  
Sarah Velandar

**Restoration Coordinator:**  
Gerry St. Pierre

**Board of Directors:**  
Barbara Dale May, Board President  
Scott Fogarty, Secretary  
John Haines  
Gayle Killam  
Amy Schoener  
Dennis Wiley

Willamette Riverkeeper  
1515 SE Water Ave.  
Suite #102  
Portland, OR 97214

(503) 223-6418  
Fax: (503) 228-1960  
info@willamette-riverkeeper.org  
www.willamette-riverkeeper.org



## Riverscape

Written and produced by  
Willamette Riverkeeper  
Design by BeBop Graphics



Printed on 100% recycled paper.

## From the Riverkeeper

Between Corvallis and Monroe, just off of 99W, is the William L. Finley National Wildlife Refuge. This refuge, at 5,325 acres, provides an amazing array of habitat. Just a few miles away, along the mainstem Willamette, is a small piece of the Finley Refuge unit, Snag Boat Bend. At 341 acres, Snag Boat provides a nice backwater where Western Pond Turtles can be seen regularly.



The main Finley Refuge is expansive, with myriad birds and mammals, as well as native plants such as camas dotting the wide open areas. Great Blue Heron, Great Egrets, Green Heron, Osprey, and Bald Eagle, are a mainstay of this area, along with many migratory songbirds. This refuge provides a key anchor of habitat with grasslands, lakes, and wetlands to sustain native species.

The William L. Finley Refuge is aptly named. Born in 1876 in California, Finley moved to Oregon at age 10. He was a photographer and naturalist, and is credited with helping to persuade President Theodore Roosevelt and naturalist, and is credited with helping to persuade President Theodore Roosevelt by making his photographs of the Three Arch Rocks area on the Oregon Coast available to the President. The President soon after declared the area a Federal Wildlife Refuge in 1907. He worked at photography at an early age with his friend Herman Bohlman for some 10 years. When he married his wife Nellie Marie Barnhardt in 1906, she became his lifelong photography partner. It is said the Finley/Bohlman collaboration created some of the finest wildlife photos of their day.

“Birds, like people, cannot live without homes,” said Finley. His photography helped to establish the Malheur and Klamath refuges, as well as others during the Theodore Roosevelt Administration. He also created wildlife films and in 1907 published *American Birds*.

His contributions to Oregon's wildlife were immense. He helped to institute Oregon's first Fish and Game Commission and became the state Game Warden in 1911. He also helped to found the Oregon Audubon Society in 1902. He retired in 1930, but continued his photography and film work and dedicated time to conservation issues.

For the Willamette System, Finley was acutely aware of the proposals to develop massive dams on the Willamette tributaries to control flooding and to provide other benefits. Ultimately he was opposed to the proposed dams on the tributaries of the Willamette, believing that they would spell the end of healthy salmon runs because of a lack of good fish passage, and that their costs simply did not make sense. His analysis was somewhat prophetic in relation to the condition of the Willamette's spring Chinook and steelhead, where today the native runs have been decimated due to the impact of the dams. He wrote in 1940 that both farms and fish could be protected, and that there were other methods to protect against flooding at far less cost.

It is important to remember the immense contributions of people like William L. Finley, and understand that good arguments had been made very early on, well before the dams were built, that they would greatly affect the natural function and health of the Willamette River system.

Travis Williams, Riverkeeper

Above photo: Finley (top right) and  
Bohlman (left) at a Flicker's nest.  
Audubon Society of Portland Archive

## Board Updates



### *Farewell to Patricia, Joe and Bill*

**Patricia Benner**, a long time Board member, is completing her years of service. As a trained ecologist, Patricia's work has greatly benefited Willamette Riverkeeper. Her research on channel morphology and historical change has illuminated how the Willamette once behaved, and how the power of the river shaped the land around it. She has spent significant energy researching the old East Channel of the Willamette near Corvallis, and was key in developing WR's floodplains report.

Her enthusiasm has always been a benefit to those around her, and coupled with her love of rivers and overall generosity, she has helped sustain WR's programs over time. Patricia has also been an avid paddler, and we look forward to seeing her regularly along the river in the coming years. Thank you, Patricia!

One of WR's founding Board Members, **Joe Coffman**, is ending his tenure. He has seen the organization grow from no paid staff, to existing staff and programs. Joe has been a long-time advocate for the Willamette River's health, and has worked tirelessly on many issues. He was the principal author of our 2000 toxics report.



Joe maintains a thriving real estate practice, but has always managed to go the extra mile in dedicating time and energy to WR. He has distinguished himself as a very committed, enthusiastic, and engaging Board member and his contributions are many. He is also one of those unique individuals able to put in time consistently, year in and year out. While Joe may no longer be on the Board, he will remain engaged in committee work. Thanks for your passion, commitment, and dedication to the Willamette, Joe!



After a three year term, **Bill Young** is departing WR's Board. Bill made significant contributions to our organization. He served as Treasurer for two years, worked diligently on committees, and always had a passion for getting people on the water. He also established the Willamette River Fun(d) at the Oregon Community Foundation, which has provided support for WR programs and other organizations. Bill has taken part in many paddle trips, including PADDLE OREGON. His good humor and steady presence will be missed, but he pledges to remain engaged in our work. Thanks for your contribution, Bill.

### *Welcome Dennis*

We are excited to welcome **Dennis Wiley** to our Board of Directors. Dennis first became involved with WR planning of our inaugural PADDLE OREGON event. As an Oregon State Parks employee for nearly 20 years and an avid outdoor enthusiast, he brings to the organization a deep connection to the river and its natural areas. He has worked statewide on parks interpretation projects, and locally as a historian and park manager of the Champoeg Management Unit. Most recently Dennis was promoted to Willamette Valley's first District Manager, with the responsibility of oversight of park operations throughout the valley, as well as the administration of the 90+ Willamette Greenway properties. Dennis enjoys canoe camping, carving paddles and planning his next trip. We welcome Dennis' enthusiasm, knowledge of the river, and dedication to our growing organization.



## 2008 Summer Calendar

Now is a great time to get out and enjoy the Willamette River. Below is a list of events. Find out more in this *Riverscape* and at [www.willamette-riverkeeper.org](http://www.willamette-riverkeeper.org). To register contact 503-223-6418.

**July 8, Tuesday**

**6pm-8pm**

**Mount Pisgah Walk & BBQ**

**July 10, Thursday**

**6pm-8pm**

**Restoration Paddle**

**July 19, Saturday**

**9am-1pm**

**PADDLE OREGON Skills Paddle**

**July 26, Saturday**

**9am-2pm**

**Salem Paddle**

**August, 18-22**

**Monday-Friday**

**PADDLE OREGON**

**September 6, Saturday**

**9am-2pm**

**Portland Paddle**

RECREATION

# RIVER FEST 08

The Willamette:  
Respect,  
Reconnect,  
Renew  
August 28 - September 7



Join the ranks of Portland Paddle participants and explore the Willamette for yourself.

Join in the fun as Portland caps off the summer with the biggest event ever to celebrate the Willamette River. Riverfest offers a family-friendly chance to come down by the riverside, get out on the water, and learn about our amazing river. Riverfest has three simple goals:

- Make the Willamette a focus of fun and learning for all ages.
- Improve river ecosystems and watershed health through increased community engagement.
- Promote increased economic activity on the Riverfront.

Activities over the 11-day Riverfest include a kick-off musical event, a species parade, community fair, triathlon, opening celebration and community fair, boat parade, bridge tours, boat tours, canoe and kayak trips, tram rides, sailing regatta, riverbank cleanup, dragonboat races, and still much more. A full calendar with details can be found online at [www.portlandriverfest.org](http://www.portlandriverfest.org). Become part of this new tradition to celebrate the River.

## PORTLAND PADDLE

Explore your Willamette  
Saturday, September 6, 2008



As part of Riverfest, Willamette Riverkeeper will organize the Portland Paddle—a paddle event to get people on the river to learn, enjoy, and foster appreciation of the Willamette. Launching from the Portland Boathouse paddlers will be provided with free canoes, gear and a tour map to explore the Holgate Channel, Ross Island, South Waterfront and then head back to the Boathouse. The map will highlight river ecology, restoration efforts, wildlife, history, impacts and challenges. Safety volunteers will be on the water to direct and guide paddlers.

### Registration opens July 15th!

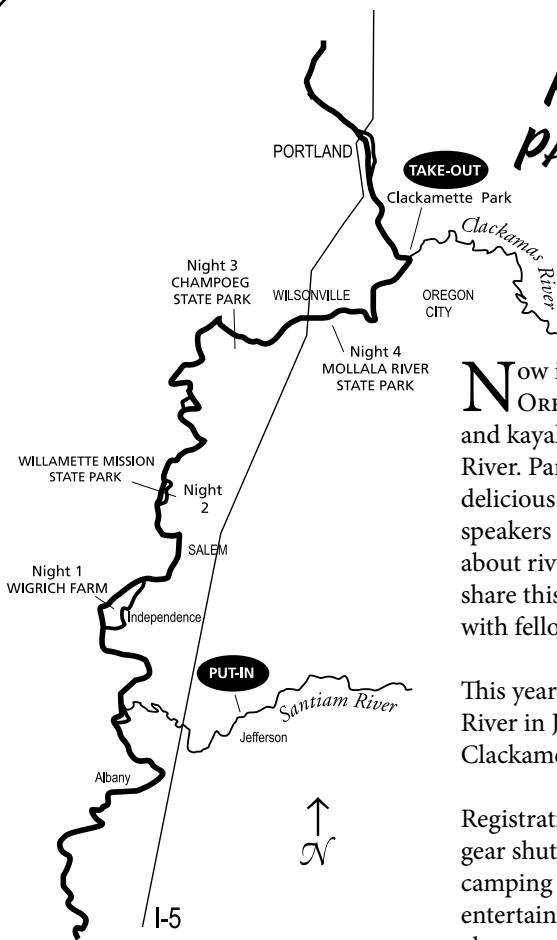
Registration is required; families and youth are welcome. You need not be an expert paddler, but for your safety we do prefer that one participant in each craft has had some experience in a canoe. While the Willamette River is primarily flat water, there are areas that can be challenging for inexperienced paddlers such as waves caused by boat traffic. Please call us if you have any questions regarding your ability to join us on this trip.

To register call 503-223-6418 or email [amy@willamette-riverkeeper.org](mailto:amy@willamette-riverkeeper.org). Please provide us with the following information:

- Name
- Phone Number
- Email Address
- Number of people in party
- Ages of youths in party
- Whether you need a canoe or have your own
- Level of paddling experience

**Riverfest partners include:** Willamette Riverkeeper, Portland Triathlon, Oregon Trout, City of Portland River Renaissance and Columbia Crossings.  
**Additional event organizers include:** DragonSports USA, Ecotrust, SOLV, Oregon Symphony, Portland Audubon, BES, South Waterfront.  
**Event sponsors include:** Willamette River Fun(d), City of Portland, Port of Portland and the Bill Healy Foundation.

## REGISTRATION FOR PADDLE OREGON 08 STILL OPEN



Now in its 8th year, PADDLE OREGON is the premier canoe and kayak adventure on the Willamette River. Participants camp together; eat delicious catered meals; enjoy nightly speakers and entertainment; learn about river issues and ecology; and share this one-of-a-kind experience with fellow paddlers.

This year's trip starts on the Santiam River in Jefferson and ends at Clackamette Park in Oregon City.

Registration includes meals, gear shuttle, safety support, camping accommodations and entertainment. Your participation also supports Willamette Riverkeeper's work to protect and restore this amazing river.



Volunteers help with logistics like event registration.

### Land Crew Volunteers Needed

PADDLE OREGON wouldn't be a first class paddle trip without the help of volunteers to support paddlers. Land crew volunteers help with camp set-up, driving, greeting participants, event logistics and more. We're still in need of a few extra hands to help for all or some of the trip. In return volunteers enjoy camping, eating, entertainment and perhaps a day or two of paddling, all for free. Please contact Amy Morrison at 503-223-6418 if you can help.

## Summer RIVER DISCOVERY Paddle Schedule

**Thursday, July 10, 6 pm to 8 pm**  
***Willamette Restoration Paddle***

Join WR for an evening paddle focused on efforts underway to restore riverside habitat along the Willamette River in Portland, including Ross Island and the Eastbank. Canoes and gear are free. Meet at the Portland Boathouse.

**Saturday, July 26, 9 am to 2 pm**  
***Salem Paddle***

Paddle with the Straub Environmental Learning Center Amateur Naturalist program. Explore six miles of river from Wallace Marine Park to Spongs Landing. Canoes and gear are free.

## Canoe & Kayak Paddle Trips Here's how it works:

Willamette Riverkeeper's River Discovery Program coordinates canoe and kayak paddle trips along the Willamette River from Eugene to Portland. In our view, this is the most powerful way to learn about the River, its history, and its ecology. Paddle trips are led by staff and volunteers who provide education and safety support to participants.

### **Experience & Registration is Required.**

You must have experience in a canoe or kayak to go on these trips. If you are interested in learning more about paddling instruction, we would be happy to direct you to local companies that provide that service. To find out about membership, trip details, reserving a canoe and/or registration for a trip, call 503-223-6418.

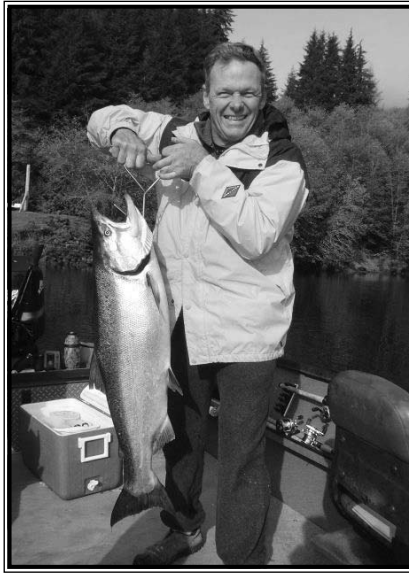
## VOLUNTEERING

### Volunteer Spotlight: Jerry Zimmer

We are pleased to shine the spotlight on Jerry Zimmer, our dedicated Lead Volunteer in the Wilsonville area.

Jerry was raised in a small village south of Rochester, NY, with his two brothers. In back of his house flowed Honeoye Creek, which drained one of the smaller Finger Lakes. He fished, boated, ice skated and hunted this area as a boy. At age 14, he bought an old Old Town canvas covered canoe, fiber-glassed it, and played in the creek and various small lakes in the area. It was the first of six canoes he has owned throughout his life.

Jerry attended the College of Environmental Science and Forestry in Syracuse with a major in Wood and Polymer Chemistry and “ran rivers” with the SU Outing Club. After moving to Corvallis to work on an advanced degree, he taught at Marylhurst College for five years. He spent his remaining working years in wastewater treatment for Portland’s Bureau of Environmental Services.



Already familiar with water quality testing procedures, Jerry volunteered for the WR Water Quality program in May of 2006, becoming a Group Leader in the fall of 2007.

Jerry now kayaks as much as he canoes, although he often canoes with his wife, Sandra. He also enjoys gardening, fishing, hiking and “geocaching” in his free time. In addition to his volunteer work with WR, he enjoys monitoring a four mile stretch of the Tualatin River for Tualatin Riverkeepers, locating and mapping caves for the Bureau of Land Management, and genealogy related work with the Genealogical Forum of Oregon.

Jerry and Sandra currently live in Canby, between the Molalla and Pudding watersheds.



© Michael Wilhelm

### Summer Volunteers Needed

Got some extra time this summer? Call us at 503-223-6418. We're looking for volunteers for the following tasks:

- **Event coordinators** - Help with planning and day-of operations.
- **Safety paddlers** - Lend your paddling skills as an extra eye on the water.
- **PADDLE OREGON land crew** - Support participants with logistical help at camp.
- **Publication editors** - Review and update our Riverscaping Guide for republishing.
- **Office database support** - Spend a few hours a week helping with data entry and office development tasks.
- **Outreach events** - Attend fairs and outdoor events in towns along the entire river.
- **Restoration work** - Help stay on top of weeds at our Eastbank restoration site.

**It's time to celebrate the volunteer work that you do!**

All events will begin at 6pm. Guided walks will end by 8pm.

**Tuesday, July 8, Mount Pisgah/Buford Park-Eugene**  
**Wednesday, July 16, Wallace Marine Park-Salem**  
**Wednesday, July 23, Avery Park-Corvallis**

Food will be provided, but if you would like to bring a dish to share, please do so and let me know!

Please RSVP to [sarah@willamette-riverkeeper.org](mailto:sarah@willamette-riverkeeper.org)  
503-223-6418.

Every year WR holds special events and picnics to “Thank You” for your help in fulfilling our mission, and volunteering for our programs. All past, current and interested volunteers are invited.

Below is the schedule of upcoming volunteer appreciation events.

A reminder with details will be sent as the event nears.

**Hope to see you there!**

E. coli, continued from page 1.

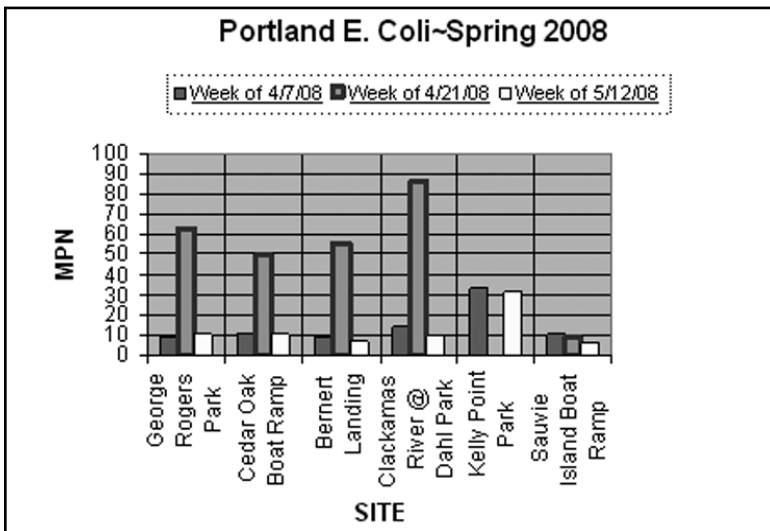
This is based upon the fact that there are no designated freshwater beaches in Oregon. Therefore, the 406 standard does not apply to swimming, rather to the next tier of beneficial use. Regardless of whether or not designated beaches exist on the Willamette River, people do and will continue to swim in its waters. We've chosen to use a lower threshold for what is considered dangerous to swimmers, in order to protect a greater number of river enthusiasts.

Figure 1, below, shows a graph of the results from some of our Portland area sites (Gladstone to Sauvie Island) for our first three sampling periods. As you will notice, none exceed even 100 MPN/100 mL. This could be attributed to dilution, resulting from spring rains and snow melt. In addition to these sites, volunteers in Portland monitor at the Burnside Esplanade, Hawthorne Firedock, the Holgate Combined Sewer Overflow pipe adjacent to Ross Island, and at the Sellwood Riverfront Park dock.

In the Salem area (Independence to Keizer), volunteers monitor the Willamette at Wallace Marine Park, Minto Brown Park, Polk Marine Park, Sarah Helmick State Park, Buena Vista Ferry, Spong's Landing, Wheatland Ferry and the Santiam at I-5. Currently we are looking for one volunteer to monitor Spong's Landing in Keizer and Wheatland Ferry at Willamette Mission State Park. If you are interested in volunteering or getting data results from any of these sites, contact sarah@willamette-riverkeeper.org.

Thanks to all of our Bacteria Monitors who make this program possible!

Figure 1. E. Coli levels at Portland sites, April - May 2008.



**What is E. coli?** *Escherichia coli* is a rod-shaped bacteria that lives in the lower intestines of warm-blooded mammals. It is necessary for the proper digestion of food but its presence in surface water indicates fecal contamination. *E. coli* belongs to a group of bacteria (some of which are harmful) known as fecal coliform bacteria. *E. coli* itself can not cause illness unless it is introduced into an open wound or the urinary tract. Certain strains, such as the infamous *E. coli* O157:H7, can be toxigenic, meaning they create a toxic by-product which can harm humans. These strains are generally found in poorly prepared food and can be fatal to children and seniors. Overall, *E. coli* is our friend since it allows us to digest food and acts as a freshwater diagnostic tool that may suggest the presence of harmful bacteria such as Salmonella, giardia, and others.

Big Pipe, continued from page 11.

The trucks that pass by my office window are carrying concrete to build a series of 7 shafts ranging from 112 to 153 feet deep, and 49 to 67 feet wide (precisely what those construction fences are surrounding). Other trucks are carrying sections of tunnel walls that Rosie places, like a puzzle, as she works. Even more vehicles will eventually transport some 250 employees to carry out specific aspects of the project. That explains the traffic congestion.

Once prepared with construction hats, safety goggles, gloves, ear plugs and a snack, we were off to tour the site. First we headed down the 115-foot Opera Shaft, luckily by an elevator with small windows, to the entrance of the tunnel. The boring machine, which has already made it to the Steel Bridge, was on a break for maintenance as it often requires replacing blades and cutters. It is an impressive view to stare up from the bottom of the shaft at a circle of sky. Various machines and pipes run to and from the surface and down the tunnel, carrying power and fresh air, the most valuable tunnel commodity. A railroad line also runs the length of the tunnel and carries workers on shift changes and supplies as needed to the end of the line. There will be no train rides today, but we are told our view of the tunnel is the straightest yet, and from there on it zigzags back in forth under the eastside industrial area.

Above ground again, we view the sections of pipe, stacked up and waiting for their turn to be lowered into the shaft. We also follow a pipe that comes from the tunnel and carries a mix of slurry (water and clay) and sediment material to a separation plant, where slurry is removed and reused while sediment materials are conveyed to river barges.

From tunnel to the river this ends our tour. The day provided me the chance to see first-hand this engineering feat in progress, and to finally put a face to the controversial project this City, and its residents, are heavily investing in—all for a worthy goal that will lessen our impact and greatly improve the health of the Willamette River.

More numbers, details and even weekly updates can be found online at [www.portlandonline.com/cso/](http://www.portlandonline.com/cso/). ■



### *Lingua mortua sola lingua bone est!*

(The only good language is a dead language!)

### What's with the Latin in the newsletter?!

Latin is used to classify all living (or once living) organisms with a two-part name, consisting of genus and species. While common names vary from place to place, and the same name can be used for two or more very different organisms, the scientific name is very precise and does not usually vary—although disagreements do come up from time to time. By using the scientific name for plants and animals, we can be sure we're all talking about the same thing. We will always use the common name in our restoration articles, but we'll also use the scientific name. Most field books also use both nomenclatures.

Himalayan blackberry and install native plants. Volunteers working with WR have been removing invasive weeds from the banktop, installing native plants, mulching new plants, and removing litter.

The native plants we've installed were chosen to do well in a sunny, dry location with poor soils—the conditions found on the eastbank. Because the banktop is next to the Eastbank Esplanade, we chose showy native plants with pretty flowers and bright fruit. The flowers and the fruit attract insects and birds, while the plants themselves require little watering or maintenance since they are adapted to our climate of cool, wet winters and sunny, dry summers.

The owners of the Portland Boathouse have planted a section of the bank top with red alder (*Alnus rubra*), Oregon grape (*Mahonia aquifolium*), snowberry (*Symphoricarpos albus*) and Nootka rose (*Rosa nutkana*). On either side of this installation, Riverkeeper volunteers have planted western serviceberry (*Amelanchier alnifolia*), vine maple (*Acer circinatum*), red-flowering currant (*Ribes sanguineum*), and mock orange (*Philadelphus lewisii*).



On the steep riverbank, BES has supplemented the mature black cottonwood (*Populus balsamifera ssp. trichocarpa*) and willow (*Salix spp.*) with more of these native trees. They also installed Pacific madrone (*Arbutus menziesii*), Oregon white oak (*Quercus garryana*), ash (*Fraxinus latifolia*), cascara (*Rhamnus purshiana*), red-osier dogwood (*Cornus sericea*), blue elderberry (*Sambucus cerulea*), Columbia River willow (*Salix fluviatilis*), thimbleberry (*Rubus parviflorus*), and Pacific ninebark (*Physocarpus capitatus*).

Willamette Riverkeeper, and project partners, will continue to maintain and supplement these installations over time. WR staff will periodically send out email announcements of informal workdays. If you, or your employer, have a group interested in getting involved on this local project, give us a call.

## Eastbank Ecosystem

The eastbank of the Willamette River, as it flows through Portland between the Ross Island and Hawthorne Bridges, consists of a steep bank armored with rip-rap, a few industrial structures and boat docks. The bank top is primarily undifferentiated fill, which is severely compacted. Despite these limitations, the area is home to cottonwood and willow, which provide nutrients for aquatic life and building material for beaver. Ospreys and bald eagles, both nest on nearby Ross Island and can be seen flying overhead.

With funding support from Metro's Nature in Neighborhoods Program and Portland's Community Benefits Opportunity Program, Willamette Riverkeeper has teamed up with the Portland Bureau of Environmental Services (BES) to remove invasive weeds and replace them with native plants. Crews from BES have been working on the steeper parts of the riverbank to remove



## Rinearson Creek Project

Rinearson Creek is a small, spring-fed stream flowing through the city of Gladstone. The creek is primarily piped underground below the city until it resurfaces at River Road. From there, it flows through a two-mile-long forested ravine to a large wetland/pond area connected to the Willamette River just north of Meldrum Bar Park (near the confluence of the Clackamas and Willamette rivers).

Like many urban stream environments, the ravine's riparian habitat is highly degraded, but it has great potential for becoming a valuable wildlife habitat area and a source of clean, cool water for the Willamette. The ravine and pond are identified by Metro as a habitat conservation area and as a regionally significant class 1 riparian zone of the highest value.

In 2006, landowner and community interest led to the formation of the Friends of Rinearson Creek and the Rinearson Creek Central Planning

Team, a coalition of neighbors, neighboring businesses, non-profits, and agencies. Partners include Willamette Riverkeeper, SOLV, Oregon DEQ's Volunteers in Action, students from the Gladstone High School Green Team and the Ivy Warriors (local home schooled students). Agency partners include the Oregon Department of Environmental Quality (DEQ), the Oregon Department of Fish & Wildlife (ODFW), Clackamas Soil & Water Conservation District (SWCD), Metro, and the City of Gladstone.

In 2007, Willamette Riverkeeper was awarded a Metro Nature in Neighborhoods grant to begin implementing the Rinearson Ravine Project. So far, the project has removed invasive species from the three-acre ravine, cleaned up a dump site, installed 2,100 native plants, monitored planting success and water quality, and educated the community about riparian habitats and watershed health.

In May, 2008, WR was awarded another Metro Nature in Neighborhoods grant as well as an Oregon Department of Environmental Quality 319 grant to continue efforts along Rinearson Creek. This additional grant support is a sign of project success and will help us continue restoration and education work into 2010. We can also begin to work on City of Gladstone property around Meldrum Pond and surrounding wetlands. Our monitoring efforts will expand into the pond, and will also begin monitoring for temperature and bacteria in support of Total Maximum Daily Load standards for the Willamette basin.

WR and all of our project partners are excited to continue and expand our work to involve the local community in the improvement of this hidden natural area.

Opposite page: Newly planted natives are easy to see, protected with orange caging at the Eastbank project.

Tree trunk chewed by beaver, a sign of wildlife along this degraded riverbank.

Elderberry © Sue Peter



Project partners tour the pond with landowners to assess restoration and management options.

### Going Native

Native plants evolved in the Pacific Northwest and are an integral part of our landscape. They thrive in our climate and provide food and housing for a variety of animals.

Once established, native plants require little maintenance. You'll probably have to water newly installed natives, but after the first summer, they can usually take care of themselves. You won't need to fertilize them, or weed as often. They help attract more birds, butterflies, and other insects. Our native plants are beautiful and practical. Properly installed, a native landscape will save you time and money, attract a variety of birds and other wildlife (or discourage wildlife that can present problems), and improve the beauty and functionality of your land.

Information on the plants mentioned on page 8, including photographs and sample planting plans for different conditions, is available at <http://dnr.metrokc.gov/wlr/pi/Go-Native>.

A more local site is hosted by the City of Portland at: [www.portlandonline.com/bes/index.cfm?c=dcbec](http://www.portlandonline.com/bes/index.cfm?c=dcbec)

Our favorite reference is *Plants of the Pacific Northwest Coast*, edited by Pojar and MacKinnon. This field guide, commonly referred to simply as "Pojar", is widely available at bookstores and nurseries.

## Litigation Update



Leaburg Dam on the McKenzie River.

### Willamette Dams Biological Opinion: *Coming Soon!*

After eight long years of inaction, on July 11, 2008, the National Marine Fisheries Service and the U.S. Fish & Wildlife Service should complete consultation on the impacts to key habitat of the endangered and threatened fish species by the Willamette Basin dams managed by the Army Corps of Engineers. In particular, these fish species include Oregon Chub, Spring Chinook, and Winter Steelhead. This long-awaited document is the result of a lawsuit brought by Willamette Riverkeeper and Northwest Environmental Defense Center (NEDC) to hasten the stalled process.

The likely result of this consultation will be a set of measures that the Army Corps and Bureau of Reclamation must take to improve fish passage, decrease the temperature of water released from the dams, and maintain sufficient water flow. We look forward to reading the document and using it to push the federal agencies to actively manage the dams in a way that mitigates their impact on threatened and endangered fish in the Willamette River basin.

### Blue Heron Permit Decision

As reported in our last newsletter, Willamette Riverkeeper won its lawsuit against the Oregon Department of Environmental Quality (DEQ) and Blue Heron Paper. This lawsuit challenged DEQ's use of a compliance schedule in Blue Heron's permit, which allowed Blue Heron to discharge millions of gallons of water each day that violated Oregon's water quality standards. Blue Heron chose to challenge Judge Marcus's opinion in state appellate court, and asked the court to put the decision on hold while the appeal is pending.

On May 9th, the Court of Appeals denied Blue Heron's request for a stay of the judgment, which means that Judge Marcus's finding—

that the permit is illegal—stands while the appeal is being reviewed. The court also noted that Blue Heron's likelihood of success on the appeal is low, and that any harm Blue Heron will experience as a result of the decision is "a function of its business model, and not the trial court's judgment."

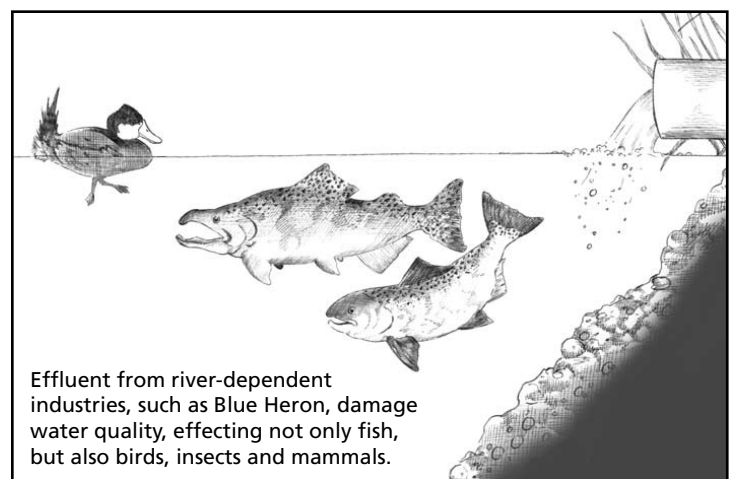
Willamette Riverkeeper hopes that this decision will convince Blue Heron and DEQ that continuing the appeal process is futile, and a better approach would be for Blue Heron & DEQ to put their time and resources into working together to decrease Blue Heron's polluted discharge into the Willamette River.

### EPA's Approval of Oregon's Compliance Schedule Rule

Settlement negotiations are continuing in the Willamette Riverkeeper's joint lawsuit, together with NEDC and Northwest Environmental Advocates, against the EPA over its hasty and ill-supported approval of the Oregon DEQ's compliance schedule rule. As the settlement has progressed, we have taken the opportunity to enter into deeper discussions with the DEQ about its permitting process.

While taking a different direction from our original settlement intentions, these discussions are moving the parties towards a greater understanding of the flaws in the DEQ's process and how they can be improved. We are cautiously optimistic that this lawsuit will result not only the in better use of compliance schedules, but in better DEQ permits across the board, as well.

We also bid a fond farewell with many thanks to Melissa Powers, of the Pacific Environmental Advocacy Clinic (PEAC) at Lewis & Clark Law School, who served as lead counsel for both the Blue Heron and compliance schedule lawsuits. Melissa is transitioning into a full professorship at Lewis & Clark, where her ample skills will grace new law students. We welcome Dan Mensher, the newest PEAC attorney, who will now be handling these cases.



Effluent from river-dependent industries, such as Blue Heron, damage water quality, effecting not only fish, but also birds, insects and mammals.

## Inside Portland's East Side Big Pipe

It's likely you've seen the "Working for Clean River" signs, the construction fencing, newspaper articles, or an increase in your sewage bill—all for the City of Portland's requirement to significantly lessen the flow of sewage and stormwater into the Willamette River, thereby limiting our impacts on the River's water quality and overall health.

### How did we get here?

In the late 19th century Portland's sewer pipes were built to transport both sewage and stormwater directly into the Willamette River and the Columbia Slough. This sewage went untreated into the river, until the early 1950's when pipes were put into place to intercept and convey sewage to the city's first sewage treatment plant. Although this was a major benefit to water quality, rainstorms and subsequent increase in stormwater triggered these pipes to overflow into the river. With growth came more concrete and more stormwater runoff, leading to an increase in the volume of these combined sewer overflows or CSOs (six billion gallons a year by 1990).

CSOs are not unique to Portland: in 1980, 31 Oregon communities had combined sewer systems. By 1989, this number had been reduced to only 4: Portland, Astoria, Corvallis and the Tri-City



### Service

District serving Oregon City, Gladstone and West Linn. Today Portland is the only city still working on updating their system. Starting in 1991, the City of Portland embarked on plans to control CSOs. In 1994, they agreed on a plan with the Oregon Department of Environmental Quality, which required the city to control CSOs to the Columbia Slough by 2000 and to the Willamette River by 2011.

So far projects completed in the Slough and on the westside have reduced CSO volume by nearly two thirds. Left to be completed is the East Side Big Pipe and additional implementation strategies to better manage stormwater, including green streets and downspout disconnection. In and of itself, downspout disconnects have removed 1 billion gallons of stormwater annually from the combined system.

### East Side Big Pipe: machines for clean water

Recently WR was invited to tour the East Side Big Pipe Opera Shaft site. Of course, I jumped at the chance. Not only are our programs working for clean water, but our office is only blocks from this site, making the progress of this project, with its cranes, trucks, traffic and road detours, a day to day reality. I had always wondered what was piled on the many trucks that passed my window, and how to best explain to paddlers what that conveyor system really dumped onto busy river barges.

The tour started off indoors with an overview of the project and lots of numbers. The East Side Big Pipe will cover six miles from McLoughlin to the Swan Island Pump Station; the pipe will be 22 feet in diameter at the average depth of 150 feet. The tunnel, where the pipe is laid, is being built with a tunnel boring machine, named "Rosie," that was manufactured in Germany particularly for this job. Rosie weighs 1,000 tons, is 220-feet long and cost \$12 million. Along with a crew of skilled workers, Rosie bores and builds an average of 39 feet of tunnel a day and will mine a total on 550,000 cubic yards of material from the tunnel. This material is being conveyed to those barges I mentioned and utilized in the Ross Island reclamation process.



Top: A view of the tunnel straight-a-way on its 6-mile path.  
Above: A look up from the 115-foot Opera Shaft.

Big Pipe, continued on page 7.



### Scappoose Bay Watershed Council

The Scappoose Bay Watershed comprises approximately 85,000 acres. It includes the mainstem and tributaries of North and South Scappoose Creeks, Milton Creek, Honeyman Creek, and McNulty Creek as well as several other smaller streams. Four salmonid species, including endangered steelhead and coho salmon spawn and rear within the Scappoose Bay Watershed. Numerous other fish and wildlife species frequent Scappoose Bay and connected streamside and wetland habitats. Scappoose Bay, a unique freshwater tidal estuary, is the focal point of this complex system, which provides fresh clean water to its human residents, and to a diverse population of plants, fish, wildlife, birds and amphibians.

Despite population growth and proximity to a major metropolitan area, the Watershed still includes over 25,000 acres of conifer forests which cool its steep headwaters. Remnant oak forests and grassy savannahs at lower elevations offer a reminder of the Watershed's natural and cultural history. Wetlands rich in wildlife still grace the lowlands, filtering the basin's runoff and providing a home for native species.

The Scappoose Bay Watershed Council (SBWC) is a 501(c)(3) non-profit organization operating in Columbia County,

Oregon. The Council was authorized by the Columbia County Board of Commissioners in 1997, and is funded by public and private grants and donations. SBWC volunteers are concerned citizens who take an active role in preserving and enhancing the Watershed. The Council oversees a small dedicated staff that manages day to day activities and projects. Augmenting the Council and staff is a large diverse group of partners, public agencies, advisors and landowners who provide invaluable guidance and assistance.

During its first 10 years, the SBWC accomplished a substantial amount of work, including the completion of a watershed and fish barrier assessment, the removal of 40 fish barriers, and the provision of numerous opportunities for community and student volunteers to get their hands dirty. Some highlights include:

- Reopening 55 miles of salmon spawning streams through barrier removal.
- Involving 2,500 area students in projects and events.
- Planting 15,000 native trees and shrubs.

In 2006, the Council generated a list of goals to accomplish in the next twenty years. They foresee a brief window of opportunity for planning and implementing large-scale

projects—ahead of the major economic development and population influx that is inevitable in this watershed. The SBWC plans to work closely with communities and landowners to maximize this opportunity before the window closes. They have started large scale wetland restoration projects in the Scappoose Bottomlands. A next big project is a geomorphic assessment of approximately four miles of South Scappoose Creek, and the development of a plan for restoration that identifies engineering options for projects such as riparian corridor enhancement and floodplain reconnection. The SBWC and its many partners are excited about this next step in improving the health of their communities and watershed.

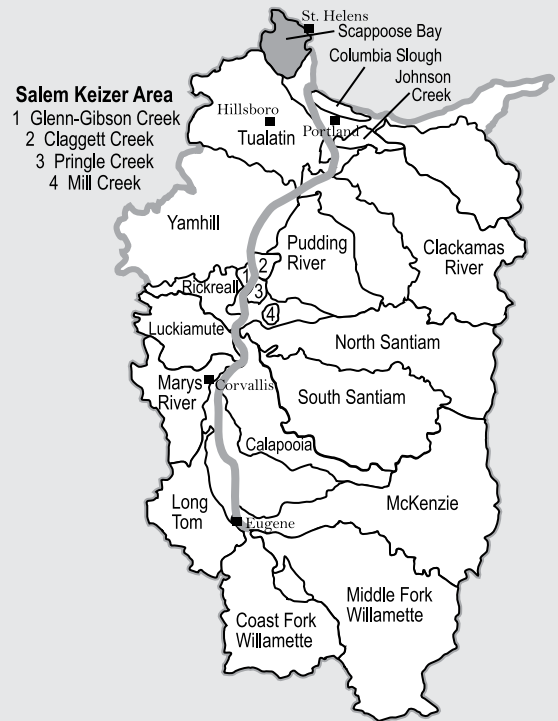
If you're interested in more information, or would like to get involved, please contact Janelle or Rita at 503-397-7904. ■

Opposite page: Moonrise over the peaceful Scappoose Bay.

Below: Culvert removal project on Alder Creek, within the Scappoose Watershed.



## WATERSHED COUNCILS OF THE WILLAMETTE BASIN



Map credit: [www.oregonwatersheds.org](http://www.oregonwatersheds.org)

### Find Out More About Your Watershed Council

- |  |  |
|--|--|
| Calapooia Watershed Council<br><a href="http://www.calapooia.org">www.calapooia.org</a>  | McKenzie River Watershed Council<br><a href="http://www.mckenziewc.org">www.mckenziewc.org</a>                     |
| Clackamas River Watershed Council<br><a href="http://www.clackamasriver.org">www.clackamasriver.org</a>                        | Middle Fork Willamette Watershed Council<br><a href="http://www.mfwwc.org/mfwwc.html">www.mfwwc.org/mfwwc.html</a> |
| Coast Fork Willamette Watershed Council<br><a href="http://www.coastfork.org">www.coastfork.org</a>                            | North Santiam Watershed Council<br><a href="http://www.open.org/~nsantiam">www.open.org/~nsantiam</a>              |
| Columbia Slough Watershed Council<br><a href="http://www.columbiaslough.org">www.columbiaslough.org</a>                        | Pudding River Watershed Council<br><a href="http://www.wou.edu">www.wou.edu</a>                                    |
| Glenn Gibson Creeks Watershed Council<br><a href="http://www.oregonwatersheds.org">www.oregonwatersheds.org</a>                | Rickreall Watershed Council<br><a href="http://www.oregonwatersheds.org">www.oregonwatersheds.org</a>              |
| Greater Oregon City Watershed Council<br><a href="http://www.gocwc.org">www.gocwc.org</a>                                      | Salem Keizer Area Watershed Councils<br><a href="http://www.watershedcouncils.net">www.watershedcouncils.net</a>   |
| Johnson Creek Watershed Council<br><a href="http://www.jcwc.org">www.jcwc.org</a>  | Sandy River Basin Watershed Council<br><a href="http://www.sandyriver.org">www.sandyriver.org</a>                  |
| Long Tom Watershed Council<br><a href="http://www.longtom.org">www.longtom.org</a>   | Scappoose Bay Watershed Council<br><a href="http://www.scappoosebay-wc.org">www.scappoosebay-wc.org</a>            |
| Luckiamute Watershed Council<br><a href="http://www.luckiamute.watershedcouncils.net">www.luckiamute.watershedcouncils.net</a> | South Santiam Watershed Council<br><a href="http://www.sswc.org">www.sswc.org</a>                                  |
| Marys River Watershed Council<br><a href="http://www.mrwc.net">www.mrwc.net</a>  | Tualatin River Watershed Council<br><a href="http://www.trwc.org">www.trwc.org</a>                                 |
|  | Yamhill Basin Watershed Council<br><a href="http://www.co.yamhill.or.us/ybc">www.co.yamhill.or.us/ybc</a>          |

**WE THANK OUR FRIENDS & SUPPORTERS**

**ORGANIZATION AND GOVERNMENT SUPPORT**

City of Portland Bureau of Environmental Services  
 Earth Share of Oregon  
 Metro Nature in Neighborhoods  
 Oregon Department of Environmental Quality  
 State of Oregon Parks and Recreation  
 The Nature Conservancy

**BUSINESS SUPPORT**

Cascade General Corp.  
 Custom Stamping  
 EcoTech Environmental Services  
 Port of Portland  
 Tom's of Maine  
 TransUnion

**FOUNDATIONS**

Willamette River Fun(d) of the  
 Oregon Community Fund  
 Grant High School CommuniCare Club

**SEA LIONS (\$500+)**

Anthony Howell &  
 Patricia Benner

**Sturgeon (\$100-499)**

Curt & Barbara Anderson  
 Larry Emery  
 Don Francis  
 Martha & Robert Gamblin  
 Jonathan Gilbert  
 Ed Jager  
 Phillip P. & Patrick Mossholder  
 Bill Plank  
 Lawrence & Katherine Remmers  
 Dan Schafer  
 Amy Schoener  
 Fran Stevenson  
 Madeleine Von Laue  
 Kit & Thomas Whittaker  
 Sylvia Yamada

**Osprey (\$50-99)**

Ted & Mary Bloniarz  
 Pieter & Elisabeth Braam  
 Bruce Couch  
 Edward Emrick  
 Scott Greenland  
 Ashley Henry  
 Roberta Jortner  
 LeeAnn Thompson & Elizabeth Katz  
 Rodney Keyser  
 Jim Labbe  
 Catherine Porter Larson  
 Vincent & Virginia Lowe  
 Frank MacMurray  
 Teresa Matteson  
 Tom & Barbara Mitchell  
 Charlie Moore  
 Walter & Carol Ottoson  
 Eric J. Pepos  
 Jim Rawls  
 Donald Reinikka  
 Dick & Lois Swearingen  
 Lynn Thompson  
 Ethan Timm  
 Alison Towle

**Chinook (up to \$50)**

Robert Allen	Corinne Newbegin
Vickie Clay	Barbara Nichelini
Jon & Mary Cottrell	Jerry Offer
Tom & Leille DeSpain	Saundra Stevens &
Joseph, Veronica &	Michael Pullen
Tommy Digiovannangelo	Thomas Doyle &
Laure Dwyer	Lorien Sekora
Dwayne & Janice Foley	Ed Sickinger
Kathy Hanson	Scott Simon
Don Hynes	Richard Thurin
Robert Jensen	Kathleen & James Tooke
Charles Landman	Lucille Wells
Sue Martin	Gordon Williams
Teresa Coleman &	Mary & Clifford Wirfs
Mike Mowery	Phyllis Wolfe

**Water Trail Guide Purchases**

Linda Albi	Eldon Haines
Brad Bafaro	Janice Hougen
Shelley Bonas	Carol-Ann & David Hult
Lisa & Beau Brousseau	Nanci Leiton
Janet Brown	Wendy Mortensen
Jason Brumble	Katherine O'Meara
David Butternut	Paul, Lila & Kelly Otto
Nestor Campos	Kurt & Mary Pfeffer
Kathleen Casson	Stephen Planchon
Roberta Chord	Dave Puckett
Lari Delapp	Steven Rose
Susan Ebinger	Billie Rowe
Kelley Grace Eden	Susan Ruggles
Merilee Evers	Anthony Schepige
Roger Graham	Kathryn Scrivener
Gordon Griffin	Manette Weber
Greg Haines	

*Double Your Donation - All At Once!*

Willamette Riverkeeper is teaming up with Jack Johnson on his 2008 World Tour and *All At Once*, a new social action network connecting nonprofits with people who want to become active in their local and world community. *All At Once* comes to life online at [www.AllAtOnce.org](http://www.AllAtOnce.org). Also visit Willamette Riverkeeper at the Jack Johnson concert, August 20th at Columbia Meadows in the Village Green, a collection of interactive booths where you can get educated, get inspired, and connect face-to-face with us and other local, national, and international non-profits.

How you can take action!

- 1) **Become a Member of All At Once!** Visit [www.AllAtOnce.org](http://www.AllAtOnce.org) to check out what you can do before, during, and after the show to get involved. Get exclusive music downloads from Jack and friends.
- 2) **Visit us at the show!** Willamette Riverkeeper will be at Jack Johnson's concert at Columbia Meadows in St Helens, OR on Wednesday, August 20th. Please come visit us in the Village Green, take environmental action, get your Village Green Passport stamped and enter to win a chance to view the concert from the stage!
- 3) **Help us raise funds!** Jack Johnson is matching every dollar contributed to us at the show and online. Please make a contribution right now, and your money will be doubled by Jack Johnson's new charity, the Johnson Ohana Charitable Foundation! (Up to \$2500 per group). Just include "allatonce" on any check or donation form when you donate to Willamette Riverkeeper.



Thank you to the following members who have had their donations matched by Jack Johnson's Ohana Charitable Foundation:

- |                           |                 |
|---------------------------|-----------------|
| Patricia Benner           | Anthony Howell  |
| Charlotte and Norman Codo | Lonn Liffick    |
| Charitable Trust          | Teresa Matteson |
| Eldon Haines              | Charlie Moore   |
|                           | Alison Towle    |

Collectively, individual actions create global change. Your actions, your voice, and your choices, all have a huge impact. [www.AllAtOnce.org](http://www.AllAtOnce.org)

*Support WR in Costa Rica!*

*Join Water & Wings April 13-26, 2009*



**R**aft, kayak, hike and swim through the natural paradise of Costa Rica with Barbara May, University of Oregon Spanish professor and WR Board President, accompanied by world-class naturalist Noel Urena Chacon.

The two-week trek begins in the far reaches of Costa Rica's last frontier—the magnificent Osa Peninsula, then on to the cloud forest, down to the jungle along the Sarapiquí River, and ends in Tortuguero National Park. This expedition is organized by the Interamerican University Studies Institute (IUSI), a non-profit educational exchange organization with headquarters in Eugene. A portion of the trip fee is donated to WR to help our own natural resources. Contact IUSI at 541-686-5947, or visit [www.iusi.org](http://www.iusi.org).



**SAVE THE DATE!**

Mark your calendar for Willamette Riverkeeper's River Celebration & Amos Burg Awards

Thursday, October 9, 2008  
6:30 - 9 pm at  
The Melody Ballroom  
615 SE Alder in Portland

Join us for an evening celebration and raffle as we honor members of our community for their dedication to restoring our Willamette River.

Tickets go on sale August 1. \$35 each.

For more information, contact Amy Baur at 503-223-6418.

**Willamette RIVERKEEPER®**

1515 SE Water Ave. #102  
Portland, OR 97214  
www.willamette-riverkeeper.org

NON-PROFIT ORG.  
U.S. POSTAGE

**PAID**  
PORTLAND, OREGON  
Permit No. 599

*...everyone has a responsibility  
to take care of our river  
and its habitat, fish, and wildlife.*



# RIVER FEST 08

**The Willamette:  
Respect,  
Reconnect,  
Renew**

**August 28 –  
September 7**



**Join us for the  
Portland Paddle  
on September 6**



For more information see page 4, or visit [www.portlandriverfest.org](http://www.portlandriverfest.org).