

Superfund Updates

Terminal 4 Cleanup and Proposed Facility

The Port of Portland has proposed an Early Action cleanup at its Terminal 4 site in Portland Harbor. This terminal consists of two slips where ships are able to moor, and one embayment called Wheeler Bay.

The Port has proposed removing some contaminated sediment from Slip 1, and moving it to Slip 3, (see below), where there is a proposed Confined Disposal Facility (CDF). The CDF is essentially an area that would take in some level of contaminated waste. The Port proposed to dewater Slip 3, then build a berm between the deposited sediment and the main river. The base of this pyramid shaped berm would be near 400 feet wide.



Port of Portland Slip 3, proposed Confined Disposal Facility.

The Port would then take additional sediment from the surrounding harbor, and deposit it over several years into the CDF area (about 15 acres). This sediment would then be “capped,” meaning that it would be covered with clean sediment to keep it in place for the long term. Eventually the surface would be paved or developed by the Port as part of its marine operations.

Much controversy has surrounded this proposal. In looking at the cleanup of the harbor for the long term, a significant amount of sediment will have to be removed from the harbor. This is a preferable option to the alternative of leaving it in place and capping contaminated sites in the river. The question becomes: “Where do we put the contaminated sediment?” The option is usually a landfill and upland disposal site, the form of which depends on the type and concentration of the contaminated material.

~ SUPERFUND continued on page 9.

Willamette Riverkeeper Tests Smallmouth Bass for Mercury

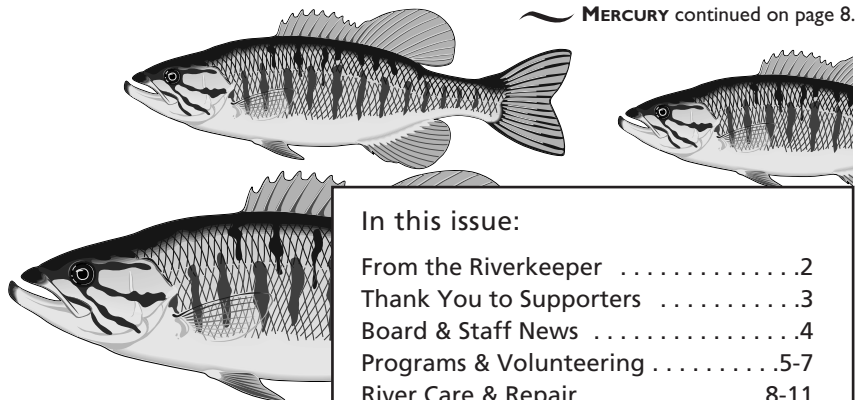


Amy Morrison processes Smallmouth Bass for mercury testing.

The Willamette River provides great fishing opportunities for Oregon’s anglers. Unfortunately for those who wish to consume their catch, there may be health risks stemming from the toxins that predatory fish tend to accumulate. One of the most omnipresent and harmful contaminants is mercury. While a small amount of mercury enters our waters naturally, the majority comes from the deposition of airborne vehicle exhaust, runoff from mining, land fills and direct municipal and industrial effluent.

On July 21st, Willamette Riverkeeper teamed up with the Waterkeeper Alliance, the Oregon Department of Environmental Quality and members of the Oregon Bass and Panfish club to catch 10 fish from the Willamette Falls area for mercury analysis. Art Bass, Water Quality Coordinator/NWSA AmeriCorps member, initiated and organized the sampling effort. Bill Egan, Terry Wu, and Tom Nelson contributed their boats and angling skills to the cause, landing 10 size-worthy smallmouths over a period of eight hours. Water quality monitor Heidi Pannke and River Protection Coordinator Amy Morrison assisted in the effort by taking water quality measurements. The DEQ provided equipment and fish handling techniques. DEQ technicians also aged the fish by examining their scales, which grow like tree rings. The Waterkeeper Alliance footed the bill and provided mercury analysis as part of a program to document mercury levels in fish across the country. Smallmouth Bass were chosen since they are a popular game fish that is under-represented in the existing DEQ mercury dataset. The addition of 10 data points increased the DEQ’s posted smallmouth data by approximately 35%.

~ MERCURY continued on page 8.



In this issue:

From the Riverkeeper2
Thank You to Supporters3
Board & Staff News4
Programs & Volunteering5-7
River Care & Repair8-11



“Working to make the Willamette River Watershed healthy for fish and wildlife, and safe for fishing and swimming, forever and for all.”

Riverkeeper & Executive Director:

Travis Williams

River Protection Coordinator:

Amy Morrison

Water Quality Coordinator / NWSA AmeriCorps Member:

Arthur Bass

Permit Analyst:

Brett VandenHeuvel

Board of Directors:

Cathy Tortorici, Board President

Rosemary Furfey, Secretary

Joe Coffman, Treasurer

Patricia Benner

Scott Fogarty

John Haines

Gayle Killam

Barbara Dale May

Bill Young

Advisory Board:

Lawrence R. Curtis, PhD.

Mike Lindberg

Mary Lou Soscia

Willamette Riverkeeper

49 SE Clay Street

Portland OR 97214

(503) 223-6418

Fax: (503) 228-1960

info@willamette-riverkeeper.org

www.willamette-riverkeeper.org

Riverscape

Written and produced by Willamette Riverkeeper

Design by BeBop Graphics



Reflections

From the Riverkeeper

Sometimes the beauty of the Willamette River system is simply incredible. On a recent canoe trip on the Coast Fork this really came through. This relatively small tributary to the Willamette is seldom thought of by most folks in the Willamette Basin. As I traveled down this winding little river, the shallow fast flow brought me past the changing fall colors, rippling green current and occasional small rapids.



Along the way several large Oregon Greenway Parks were passed, with giant cottonwoods lining the bank, interspersed with gnawed willow sticks from the resident beaver. The low angle of sunlight added vibrant color to the gold and red of the leaves.

This little tributary is a critical part of the Willamette system, yet it is relatively seldom traveled or seen. The Greenway parcels are part of the larger Willamette Greenway program, and speak to the diversity and geographic scope of the public lands along the Willamette.

These areas also offer glimpses of opportunity. Today there is a significant need to restore vegetation along the riverbank, thereby creating shade to keep water temperatures cool for fish in the summertime. There is also a need to look into floodplain restoration, providing flows from the Corps of Engineers dams that can inundate floodplain areas—resulting from structural modifications. This kind of seasonal inundation can be very beneficial to fish and other wildlife. The Coast Fork and the Middle Fork, the two tributaries that form the mainstem Willamette, present two opportunities to do this work.

The message is simple: The key to Willamette habitat restoration—the literal improvement of riverside areas and lowland forests and floodplains—rests with the assemblage of private landowners, state park lands, and federal partners like the Corps. These groups must work together for a common goal. Over time there may well be a greater level of healthy habitat connecting existing Greenway Parks that allow the Willamette to better serve the needs of those species that have lived here for thousands of years.

Rivers in some ways are the representation of change, so changing our approach and thinking about how we “manage” them should be a natural fit for keeping the rivers of the Willamette system healthy for the long haul.

Travis Williams, Riverkeeper

Recognition & Appreciation

We thank the following foundations and organizations for their valued support of our work:

**Bullitt Foundation
Keen Footwater
Oregon Community Foundation**

**REI
Spirit Mountain Community Fund
Willamette River Fun(d)**

We thank the following businesses and organizations for their support:

Alder Creek Kayak & Canoe
American Heritage Rivers
Bureau of Land Management

City of Portland Bureau of
Environmental Services
River Renaissance
New Seasons

Port of Portland
Tazo Teas
Sportcraft Marina

We thank the following individuals for their recent contributions:

Sea Lion (\$500+)

Georgia Leupold Slack
Rachelle Speckman

Sturgeon (\$100 - \$499)

Charlotte Aborn
Charles Blanke
Lew Bowers

Irving & Jean Dayton
Charles Gerhardt
Molly Kohnstamm

John Marks
Lawrence & Katherine Remmers
Louis Silverman

Osprey (\$50 - 99)

Susan and Timothy Cowles
Robert Frank Johnston
David Laing
Scott & Caroline Lamb
Carolyn Matthews & Bruce Nelson
Gorham Nicol
Galen Ohmart

Jim Rawls
Bonnie Shoop & Steve Gibons
Courtland & Linda Smith
Doug Smith
Ed & Marion Wilson
Elena Yingling

Chinook (\$25 - 49)

Karl & Ruth Adams
Cat Brown
M'Lou Christ
Judy Colligan-Marshall & James Marshall
James Dale
Marcia & Chris Durham
Bill Egan
Carol Gritsch
Alison & Michael Hart

Jesse Jones
Wanda Knight
Jane Lane
Mike & Carolyn Lindberg
Don Lyons
Eric & Linda Mihata
Michele Miller
Vonda Purdy-Myers
Jenny Pompillo

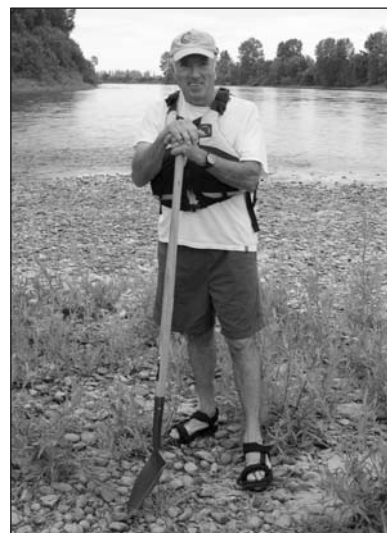
M. Margaret Rogers
Shelley & John Signett
Douglas Sponseller
Mary Tax
Barb Tompkins
Maye Thompson
John Toso
Christine Wilson
Dirk & Nancy Wittig

Riverkeepers Board & Staff News



WRK Welcomes New Board Members

Bill Young has been a Willamette Riverkeeper member for four years, and over the past year has been a major contributor to the success of the Portland Boathouse and our RIVER DISCOVERY PROGRAM. His leadership and people skills have proven useful as Volunteer Boathouse Manager and have helped to move the Boathouse forward as an organization, making him a familiar face around the Boathouse. In the past year Bill has founded the Willamette River Fun(d) at the Oregon Community Foundation, which has helped to support WRK's work on the Willamette Water Trail. Bill brings to the board a new found dedication to promoting on-the-water experiences to the public.



Bill spends a day helping WRK post signage on the Water Trail.



Barbara drifts her River Guardian stretch near Eugene.

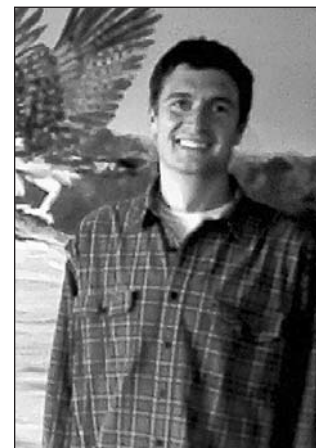
Barbara Dale May has been a Riverkeeper member and River Guardian for over five years, she has participated in almost every PADDLE OREGON event as a pod leader and is always looking for ways to introduce others to the river and Willamette Riverkeeper. As a River Guardian, Barbara dutifully watches over and reports everything from eagle sightings to proposed gravel operations on Rivermile 175.5-169 in Eugene. When not keeping an eye on the river, Barbara is often paddling other Oregon rivers, leading cultural adventure trips in Costa Rica, and getting the most out of her recent retirement from teaching Spanish Literature at the University of Oregon. Her love of the river is contagious, and we welcome her enthusiasm and fresh ideas to our board of directors.

New Water Quality Advocate

Brent Foster has recently moved on from his water quality work with Willamette Riverkeeper to become the Executive Director of Columbia Riverkeeper. Brent's passion for clean water has helped shape our Natural Waters Program and continues to motivate river advocacy throughout the state. We look forward to continuing our work with him in this new position.

Taking over Brent's work is, **Brett VandenHeuvel** who will now lead Willamette Riverkeeper's evaluation of National Pollutant Discharge Elimination System (NPDES) permits, wetland fill permits, and related water-quality issues. In addition, he will represent Willamette Riverkeeper in our occasional legal work.

Brett has taught field science throughout Oregon, researched climate change in Antarctica, and explored the wilds of Clean Water Act regulations. He enjoys paddling and birding in the Willamette Valley, nordic skiing, and botany. Brett holds a J.D. from Lewis and Clark Law School, an M.S. in Quaternary and Climate Studies from University of Maine, and a B.S. in geology from Hope College.



We welcome Brett to Willamette Riverkeeper!